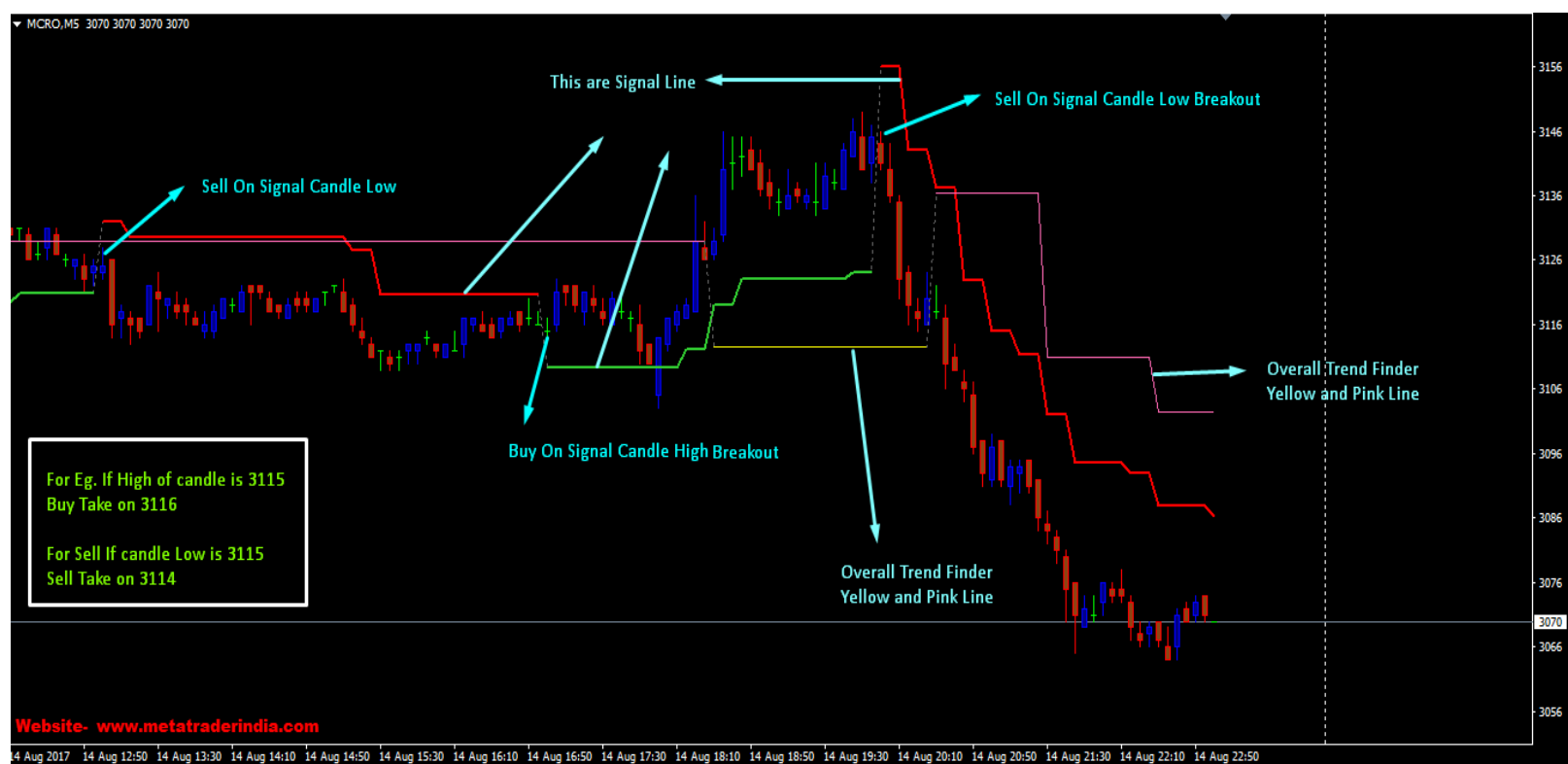
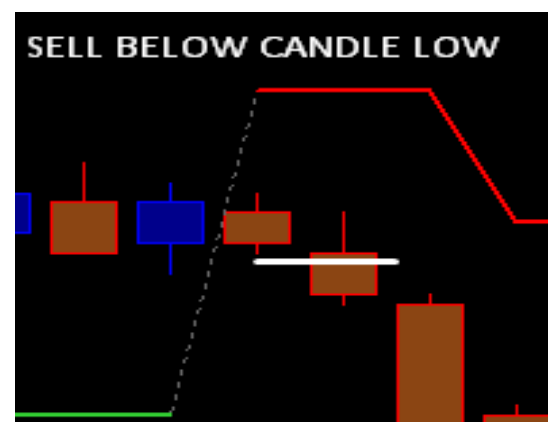
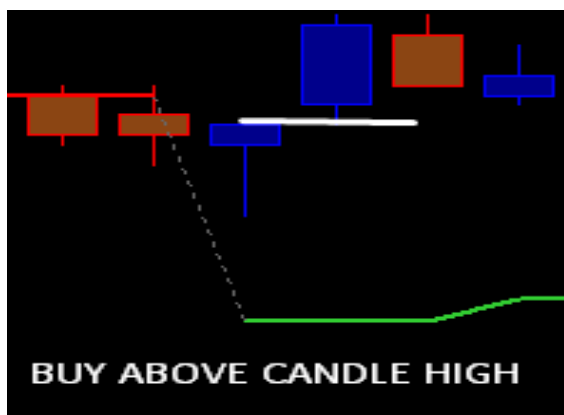


How Auto Trading Robo System Works



- In Auto Trading Robo System we have 2 options Either on Next Candle Opening in this the trade will be taken on Just After the Signal Candle Close or Can Say on Next Candle Opening.

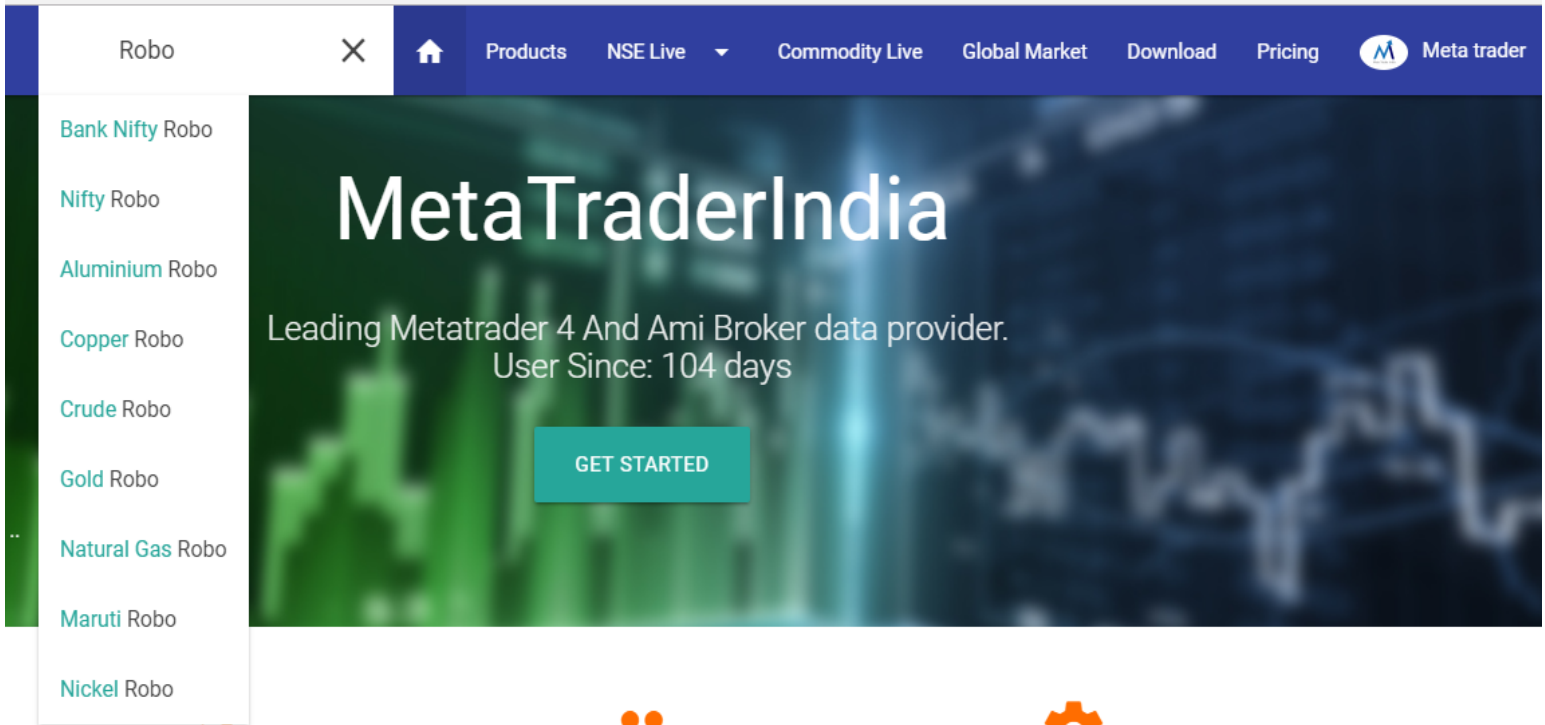
- Secondly We have Option of Signal Candle Breakout
In This Buy Trade Will Be Take on Signal Candle High Breakout
And Sell Trade on Signal Candle Low Breakout.



Recommended To Use Second Method For Accurate Signal

Note- Green Line And Red Line Are The Signal Line To Trade Intraday

Live Demo of Signal on Website With Script or Pair Name Ending With Robo



The screenshot shows the MetaTraderIndia website interface. At the top, there is a dark blue navigation bar with the following items: 'Robo' (with a close icon), a home icon, 'Products', 'NSE Live' (with a dropdown arrow), 'Commodity Live', 'Global Market', 'Download', 'Pricing', and the 'Meta trader' logo. Below the navigation bar, a white sidebar menu is open, listing various trading pairs: 'Bank Nifty Robo', 'Nifty Robo', 'Aluminium Robo', 'Copper Robo', 'Crude Robo', 'Gold Robo', 'Natural Gas Robo', 'Maruti Robo', and 'Nickel Robo'. The main content area features a dark blue background with a blurred candlestick chart. The text 'MetaTraderIndia' is prominently displayed in white. Below it, the text reads 'Leading Metatrader 4 And Ami Broker data provider. User Since: 104 days'. A teal 'GET STARTED' button is centered on the page.

Website- www.metatraderindia.com